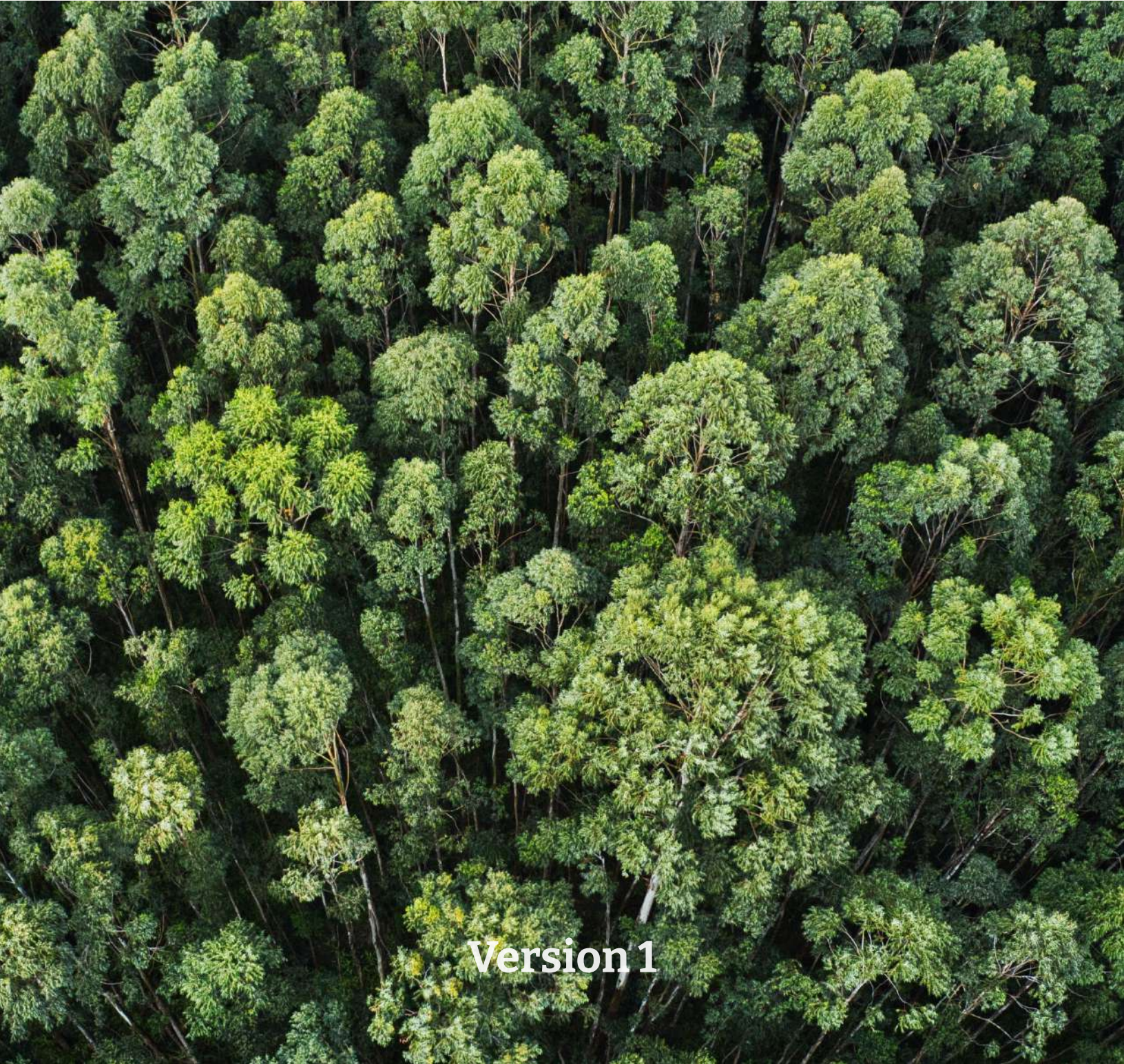


SUSTAINABILITY PLAYBOOK

2021



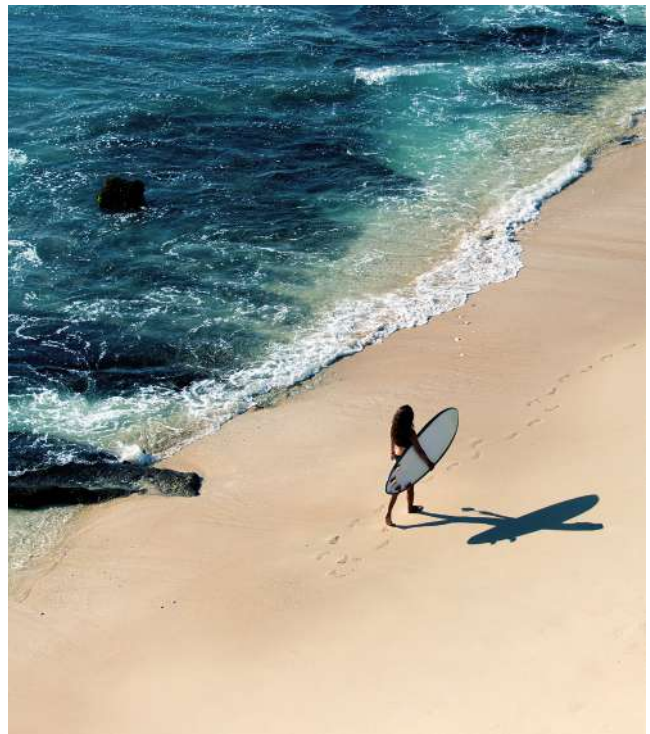
Version 1

Table of Contents



7	Introduction
8	Environmental Stewardship
10	Water Stewardship
12	Forest Stewardship
14	Social Compliance

16	Better Leather
18	Recycled Content
20	Sustainable Cotton
22	Regenerative Agriculture
24	Biomaterials



26 Circular Solutions
28 Carbon Solutions
29 Deadstock & Nearshoring

30 Sustainable Impact
31 Our Sustainable Search Ecosystem



SUMMARY

Whether the approach to sustainability is grounded in 'doing the right thing' or meeting market or investor demands, one thing is certain: sourcing for sustainability has its challenges. This playbook aims to simplify the process. The Material Exchange has developed an innovative sustainability search tool that harmonizes ESG reporting criteria, brand commitments to social and environmental compliance, valid third-party certifications as well as the groundswell of new innovative and branded fibers. For suppliers, sharing efforts made at the facility level as well as showcasing the plethora of certified materials is our top priority. Similarly, helping brands accelerate the transition to preferred materials and finding suppliers that prioritize environmental and social impacts should be as simple.

The Material Exchange sustainability sourcing tool harmonizes programs and certifications in 12 key categories, and narrows the search for buyers while adding 'badges' to supplier profiles that fulfill the criteria mapped to a search. Those 12 categories are updated as both the industry advances and expectations for minimum thresholds advance. We invite you to explore the categories on the following pages.



Material Exchange welcomes your feedback:
sustainability@material-exchange.com



INTRODUCTION

Sourcing for Sustainability

Material Exchange harnesses the power of digitalization to allow brands, designers, product developers and more to source efficiently and easily by supplier, by region and by material. Our SmartSearch tool allows users to narrow down the vast collection of materials on the platform (over 40,000) to a select list in seconds. For those buyers and brands that have made pledges and commitments around sustainability and ESG, we have developed a sustainability search tool that allows users to further narrow down selections by sustainability criteria for suppliers, for materials, or for both. This series of Material Exchange badges has been crafted with feedback and support of external third parties and includes some of the larger third-party certifications like the OEKO-TEX® or Zero Discharge of Hazardous Chemicals (ZDHC) as well as some programs and certifications that are more widely known locally like China's Chromium-free®Leather Alliance. This playbook outlines the badges aligned with search queries and will help you navigate the platform, find sustainable materials and follow the pathway for a more sustainable industry. To see how the sustainable search tool maps to SASB or SDG reporting, see [page 30](#). As sustainability criteria and credentials continue to evolve, so will our sustainability search tool. Our current sustainable search ecosystem can be found on [page 31](#).

If you have any questions about responsible sourcing,
email: sustainability@material-exchange.com
Join us in creating a more sustainable industry.



ENVIRONMENTAL STEWARDSHIP

A recent draft report from the World Resources Institute (WRI) and the Apparel Impact Institute (Aii) stated that the global GHG emissions in the supply chain can be measured as follows:

24%

Tier 4

(raw material extraction)

15%

Tier 3

(raw material processing)

52%

Tier 2

(material production)

9%

Tier 1

(product assembly)

Reducing GHG emissions in the supply chain can be addressed in many areas, and in addition to the Material Exchange *carbon solution* sustainability search, the *environmental stewardship* sustainability search highlights the efforts of facilities to address their impact. A popular industry tool for this effort is the Higg Facility Environmental Module (Higg FEM), which is designed to measure and quantify the

sustainability impacts of a facility. Suppliers are invited to list the data they share with the FEM on Material Exchange. In addition, this sustainable search includes facilities that have set Science Based Targets (SBTi), which provide companies with a clearly defined path to reduce emissions in line with the Paris Agreement goals, have registered as a B Corp, or are engaged in local initiatives to reduce their carbon footprint.



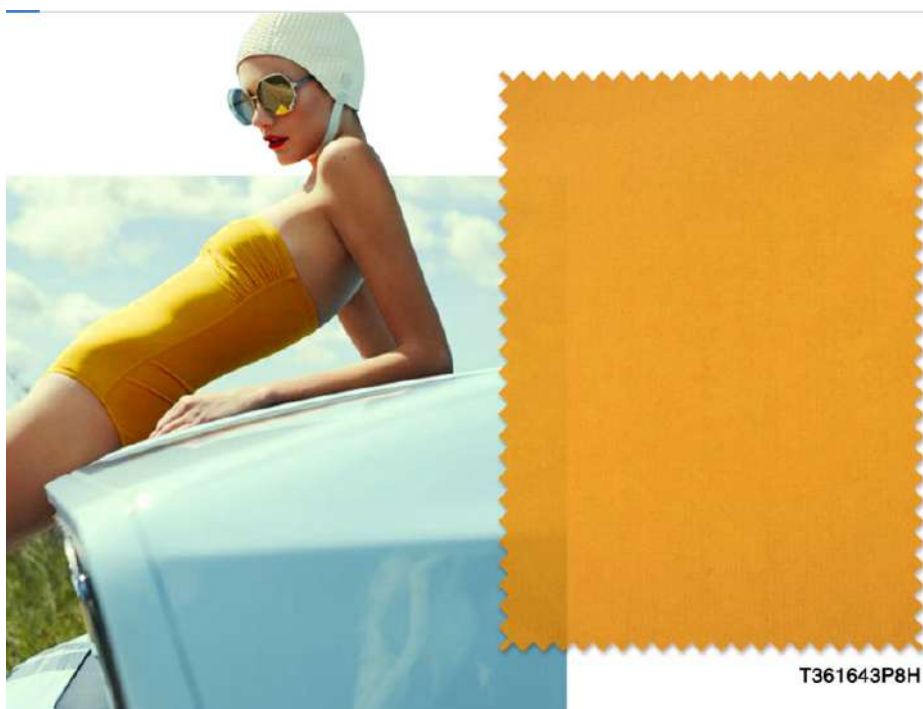
Certificates and programs included:
ISO 14001, International Carbon Reduction and Offset Alliance (ICROA), EIM (Environmental Impact Measurement), Reset Carbon, Partnership for Cleaner Textiles (PACT), Low Carbon Manufacturing Programme (LCMP) and more.

Source:

1. Roadmap to Net Zero, a new draft report from the World Resources Institute and Apparel Impact Institute, supported by the Laudes Foundation, as reported in Ecotextile News, Issue 100 December 2020 / January 2021. Page 25.

Supplier Spotlight: HongGang

HongGang is a key apparel supplier on the Material Exchange dedicated to environmental stewardship. The facility reduces energy consumption through thermal energy storage systems. Their thermal energy storage systems offer reduced energy consumption across washing, dyeing, and finishing processes. Also, their high-efficiency washers use 80% less water than traditional washers, while offering 20% energy savings.





WATER STEWARDSHIP

Water stewardship is an essential cornerstone to every sustainability strategy. According to the World Bank, "if current water management policies persist, and climate models prove correct, water scarcity will proliferate to regions where it currently does not exist and will greatly worsen in regions where water is already scarce." This sustainability search criteria recognizes global programs like ZDHC and local programs like Water Stewardship Pakistan (WSP).

Certificates and programs included: bluesign®, ECO PASSPORT by OEKO-TEX®, GreenScreen® for Safer Chemicals, STeP by OEKO-TEX®, ZDHC, EIM (Environmental Impact Measurement), Alliance for Water Stewardship, Ecolab®, Aii, REACH and more.



Source:
2. World Bank, 2016. "High and Dry: Climate Change, Water, and the Economy." Retrieved from: <https://openknowledge.worldbank.org/bitstream/handle/10986/23665/K8517.pdf>

Supplier Spotlight:
SAITEX

98% recycled water
+ 2% evaporated
= Zero discharge

SAITEX strives to use processes that are gentle to the planet, by always considering the impact of their decisions on their associates, customers, suppliers, community, and the environment. Innovators in *water stewardship*, the facility states, "Recycling can have a significant impact on cost and natural resources. By changing some traditional practices in denim manufacturing to decrease our water consumption, not only we make less harm to our planet, but we are also able to save over \$400,000 per year. Just one example of how recycling can be profitable."





FOREST STEWARDSHIP

200 Million

ancient and endangered forests are felled every year to convert into Man-Made Cellulosic Fibers (MMCFs)

More than 200 million ancient and endangered forests are felled every year to convert into Man-Made Cellulosic Fibers (MMCFs). To be a preferred or sustainable fiber, the feedstock for man-made cellulose must come from certified sustainable sources. To help avoid deforestation and degradation, Canopy has developed the framework for independent third-party audits to assess fiber producers' risk of sourcing from ancient and endangered forests. Audit findings then feed into analysis and ranking and producers leading the way are awarded CanopyStyle's 'green shirt' and are included in this sustainability search category.



Certificates and programs included:

Canopy Green Shirts, Sustainable Forest Initiative (SFI), Programme for the Endorsement of Forest Certification (PEFC) and Forest Stewardship Certification (FSC).

Branded fibers like:

Livaeco, LENZING™ ECOVERO™ viscose, TENCEL™ Lyocell, TENCEL™ Lyocell x Micro Technology, TENCEL™ Modal, TENCEL™ Modal x Micro Technology, Naia™ Renew and more.

Source:

3. CanopyStyle, Hot Button Ranking and Report (2020 Edition). <https://hotbutton.canopyplanet.org/>

Page 12

4. Textile Exchange, Preferred Fiber & Materials Market Report 2020

Supplier Spotlight: Naia™ Renew

Naia™ Renew offers an innovative solution to the fashion industry's big issues, developing circularity at scale. Produced from 60% sustainably sourced wood pulp and 40% certified recycled waste plastics, Naia™ Renew creates value from hard-to-recycle materials that would otherwise be destined for landfills. The closed-loop process used to create Naia™ Renew prioritizes the safe and environmentally sound use of chemicals, ensuring that the products you create are as sustainable as they are stylish. The manufacture of Naia™ Renew also enables a measurably reduced carbon footprint over the fiber's life cycle, and it is certified biodegradable and compostable, creating the possibility for fabrics to safely return to nature at the end of their usefulness. Naia Renew can also be found through the *recycled content* and *carbon solutions* sustainability search terms.



*Naia™ Renew recycled content is achieved by allocation of recycled waste material using an ISCC-certified mass balance process.



SOCIAL COMPLIANCE



Employee health, safety and wellbeing is not only important from an ethical perspective, but now counts towards ESG rankings. Finding suppliers that align on employee rights to safe working conditions, freedom of employment, safety from discrimination and harassment as well as women’s empowerment are key to responsible sourcing. According to the Sustainable Accounting Standards Board (SASB), “Companies with strong supply chain standards, monitoring, and engagement with

suppliers to address labor concerns may therefore be better positioned to protect shareholder value over the long term.” The social compliance sustainability search term includes well-known programs and social audits like Fair Trade, the Social & Labor Convergence Program (SLCP) as well as material certificates that have a social compliance component as part of their framework like Global Textile Standard (GOTS), Leather Working Group (LWG) and more.

Programs and certificates include:

Fair Trade, Worldwide Responsible Accredited Production (WRAP), Social & Labor Convergence Program (SLCP), B Corps, Global Textile Standard (GOTS), Leather Working Group (LWG) and more.

Partner Spotlight:

WRAP 2025

WRAP is the world's largest independent certification program focused on the apparel, footwear, and sewn products sectors. Becoming a WRAP-certified facility involves much more than simply passing an audit. Using WRAP can raise a facility's profile in the eyes of some of the notable brands and retailers that accept the audits. Material Exchange has joined the WRAP 2025 commitment to increase the number of WRAP-certified facility workers from 2.5 million to 5 million workers by 2025.



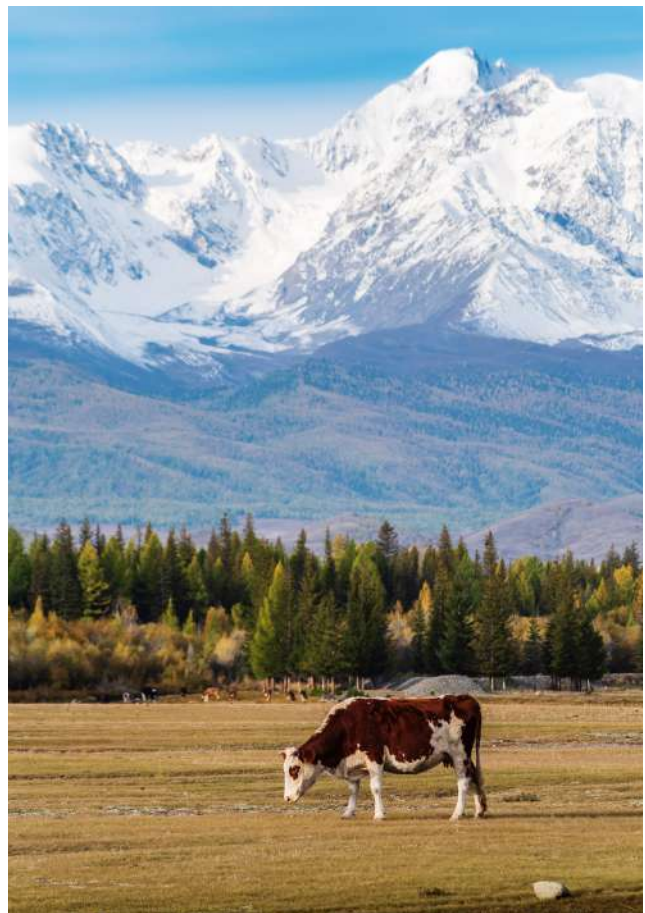


BETTER LEATHER

Some claim that as hides are a low-value by-product (or co-product) of the food industry they are essentially waste and “every one used is one less being sent to landfill”. However, leather has more to offer than this by-product story; when it comes to sustainability, the leather industry is making strides in animal welfare, environmental and social responsibility. This

includes increasing transparency and measuring impacts all along the value chain, from the husbandry and welfare of animals to the beamhouse and the tannery. Better industry standards lead to *better leather*. This sustainability search term returns both facilities that are certified or that are registered in a program to lessen impact, as well as the materials produced in those facilities.

Programs and certificates include: Leather Working Group (LWG), Sustainable Leather Foundation (SLF), Zero Discharge of Hazardous Chemicals (ZDHC), Institute of Quality Certification for the Leather Sector (ICEC), LEATHER STANDARD by OEKO-TEX®, ChromeFree®Leather Alliance and more.



Source:

5. RealLeather, <https://s.choserealleather.com/wp-content/uploads/2021/05/Sustainability-Factsheets-Sustainability.pdf>

Partner Spotlight: Sustainable Leather Foundation

The Sustainable Leather Foundation's objective is to enable collective improvement and education globally, for more sustainable practices in leather manufacture and production, from raw material to finished product and post consumption. A not-for-profit organisation, the Sustainable Leather Foundation (SLF) is concerned with all aspects of sustainability – Environmental, Social and Governance. Alongside the work within the leather value chain, SLF is committed to ensuring that consumers have a clear mechanism to see and understand the sustainable attributes of leather as a material, and the work that the industry does to ensure good practice.

At the heart of the Foundation is the SLF Transparency Dashboard™ and integrated web platform, linked to a certification standard that assesses new, and records existing, conformance and performance certification of leather manufacturers and associated facilities against the three pillars of sustainability.





RECYCLED CONTENT



Programs and certificates include:

Global Recycled Standard (GRS), Recycled Claim Standard (RCS), SCS Recycled Content Standard, Ocean Bound Plastic Certification and more.

Branded Fibers include:

CORDURA® fabric, Polylana®, Spandex Roica™ V550, TENCEL™ x REFIBRA™ Technology, Unifi REPREVE®, Unifi Sorbtek®, #tide ocean material®, and other fibers processed with recycled feedstocks

The worldwide production of synthetic fibers has increased year over year and in 2018 was upwards of 74 million metric tons. Polyester leads this group with a market share of approximately 52 percent of the global fiber production in 2019. Loved for its physical properties, low price, and recyclability, polyester can be a preferred material when recycled.

Finding a solution for Ocean Plastic has long captivated consumers, and many global initiatives include ocean-bound plastic capture, processing and spinning bottles into yarn. In addition to the waste diversion, many brands seek to manufacture with recycled polyester (rPET) as it can be 40% less emissions-intensive because of material recycling and closed-loop production methods. However, synthetics like polyester and acrylic are not the only recycled material the industry can adopt. There is also the recycling of cotton, wool, leather, and MMCFs – all aiming to reduce the need for virgin feedstock, reduce impacts and lead to a more circular textile industry.

Source

6. Statista, Synthetic fiber production worldwide from 1940 to 2018, <https://www.statista.com/statistics/741368/world-synthetic-fiber-production/>

7. Textile Exchange, Preferred Fiber Material Market Report, 2020. Page 61

8. McKinsey & Company and Global Fashion Agenda, Fashion on Climate Report, 2020. Page 13.

Supplier Spotlight:
#tide ocean material®

Recycled means impact

15 Million

#tide saves 15 million bottles from polluting the ocean

79%

#tide creates 79% Less CO₂ emissions



Recycled material, made from ocean plastic, saves marine life while meeting circular commitments. Switzerland's #tide ocean material® collects ocean-bound plastic waste in Southeast Asia to transform into a granular material. The #tide yarn is suitable for apparel, bags, shoes, home & office interiors and any other project using high quality polyester textiles. It creates world jobs in developing countries, pays fair wages, and complies with high ethical standards. #tide ocean material® saves 15 million bottles from polluting the ocean, this saves 52% of energy and creates 79% Less CO₂ emissions. #tide is not only a supplier of 100% upcycled ocean-bound plastic but also a strong, credible label for social and environmental sustainability.



SUSTAINABLE COTTON



Certificates and programs included:

ABRAPA, Better Cotton Initiative (BCI), Cleaner Cotton, Cotton made in Africa (CmiA), Fairtrade, Fairtrade Organic, Field to Market, ISCC, myBMP, Organic, REEL Cotton, Organic Content Standard (OCS), Global Organic Textile Standard (GOTS), as well as traceability pilots and programs. As brands seek to mitigate risk and share stories from the field, traceability programs such as Oritain, BanQue and BASF e3® are also key to sustainable sourcing.

According to the WWF, cotton is the most widespread, profitable non-food crop in the world. Its production provides income for more than 250 million people worldwide and employs almost 7% of all labor in developing countries. While the crop represents approximately 23% of all material usage, the uptake for preferred or organic cotton options is only about a quarter

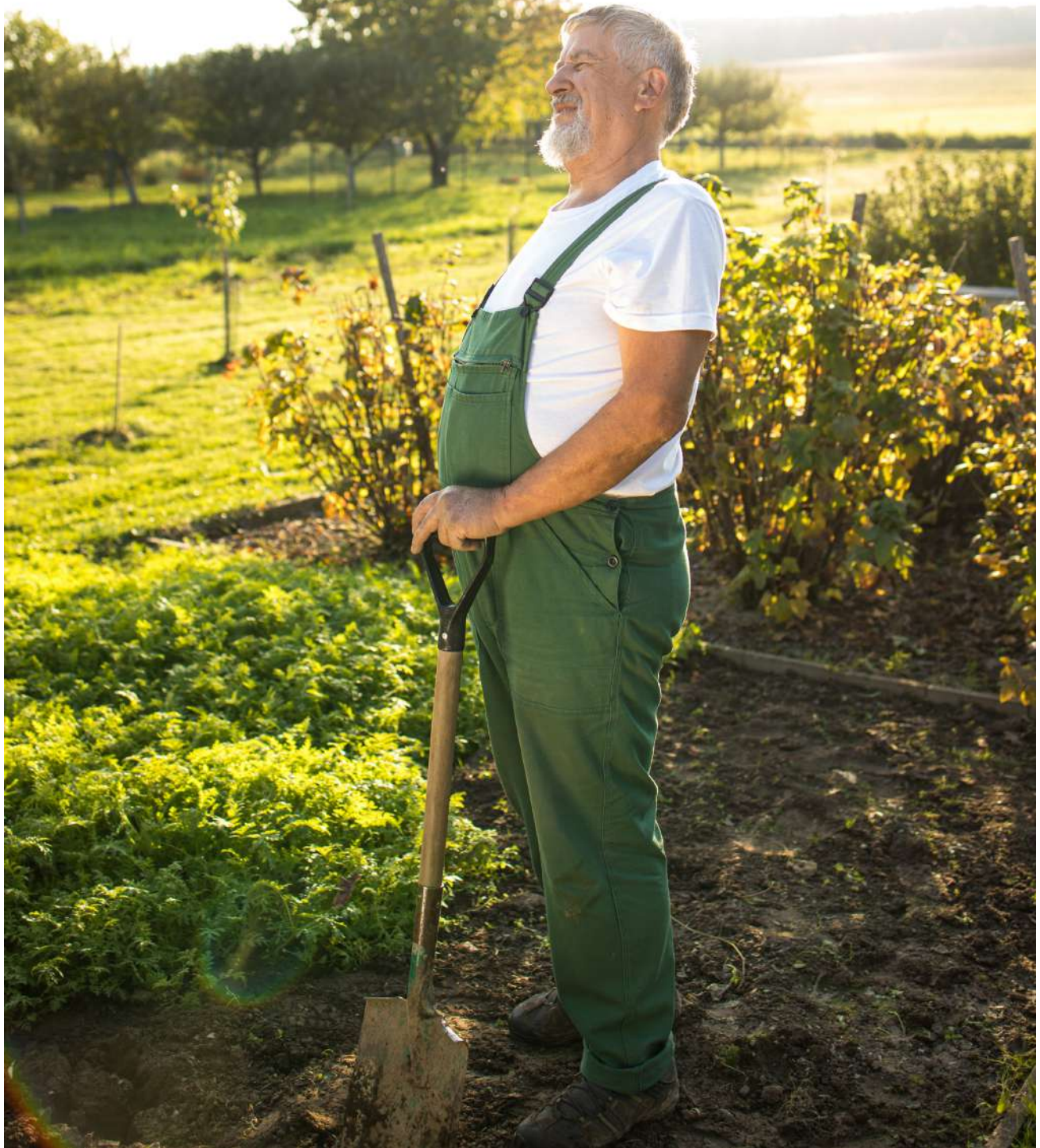
of that (25%). With many brands pledging 100% usage across their assortment, sourcing 'sustainable cotton' can be a challenge. This sustainability search criteria includes programs that range from organic (GOTS or OCS certified), to preferred (BASF e3, Better Cotton Initiative (BCI), and Cotton made in Africa (CmiA) to name a few) as well as Cupro™ and post-industrial recycled.

Source:
9 Cotton | Industries | WWF, no date. (worldwildlife.org)
10. Textile Exchange, Preferred Fiber Material Market Report, 2020.



Material Spotlight: e3[®] Sustainable Cotton

America's BASF provides individual field-level and cotton bale traceability, e3[®] Sustainable Cotton. It's the only program that can help customers know exactly what their clothes are made of and the whole process from the farmer to the gin. They create sustainability measures to track specific environmental and social measures for each individual field and help farmers produce more responsibly raised cotton. Furthermore, e3 Sustainable Cotton is driven by third-party verification to allow farmers to minimize their environmental impact and grow high-quality cotton.





REGENERATIVE AGRICULTURE

Programs and certificates include:
Regenerative Organic Certified™ (ROC),
Land to Market™, and more.

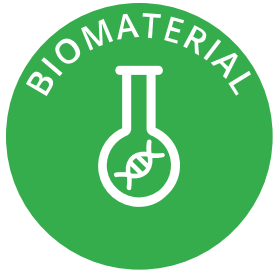
Branded Fibers include:
Climate Beneficial Wool, Colorganic® cotton,
The Chico Flax Project, and more.



More and more farms around the world are adopting regenerative practices; working to create long-term solutions to the climate crisis. In return, Regenerative Agriculture is increasingly becoming part of the sustainable fashion conversation. The *regenerative* sustainability search term highlights programs and materials focused on efforts to improve soil health, animal welfare and social fairness.

Source:

11. The New York Times, 'Why is fashion talking about regenerative farming'. Dana Thomas. April, 2021.



BIOMATERIALS

As the field of 'bio' materials continues to grow and innovate, fashion brands and consumers are drawn to *biomaterials* as alternatives to conventional petroleum-derived materials. Biobased materials like leather and cotton are not new to the footwear or apparel industries. Material Exchange's biomaterial sustainable search functionality includes new and innovative materials that are biosynthetic, biofabricated, or bioassembled. These are the distinctions coined by BIOFABRICATE, the platform designed for biomaterial innovators and consumer brands. Biofabricated and bioassembled materials are produced by living cells and microorganisms, such as bacteria, yeast, and mycelium. Biosynthetics materials are comprised of synthetic polymers, which include an input of biological origin (biomass) where the process is performed by a living microorganism. At Material Exchange, they can all be found using the sustainability search term: *biomaterials*.



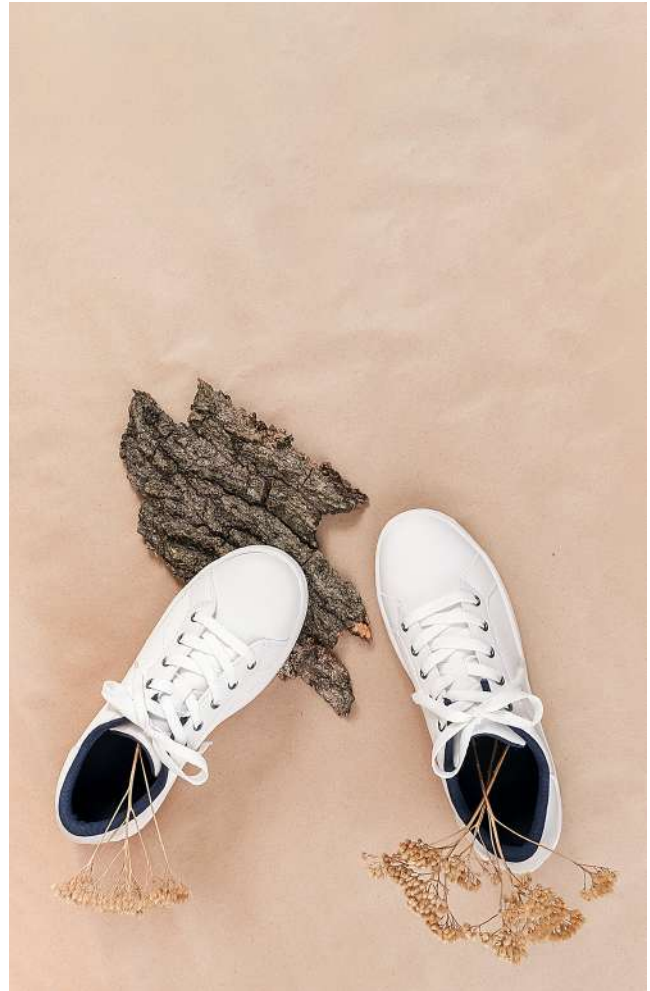
Programs and certificates include ISCC, Bon Sucro, Bio Pure, 100% biobased, RSB, Organic IFoam, USDA Certified Biobased Product and more.

Branded Fibers include: Sorona®, PLA, biobased PTT, Rilsan®, biosteel®, Spinnova®, Pinatex, and more.

Material Spotlight:

Leather Alternatives

As fashion brands and customers advance the trend toward more sustainable and animal-free materials, the desire for non-animal leathers continues to increase. Whether made from apples, or grape skins, mycelium or pineapple, when the feedstocks for leather alternatives are bio-based, these materials can be found using the *biomaterials* sustainability search term.





CIRCULAR SOLUTIONS



Historically, the fashion industry has been a highly refined linear system, but as brands commit to reducing impact and waste, the shift is underway to a circular system. The circular economy for the apparel and footwear industries can include: circular materials that contain existing recycled sources, such as pre-consumer or post-consumer textile waste or agricultural byproducts; materials produced in a circular system that reduces waste; and fibers and

materials designed for durability. While the sustainable search categories recycled content and biomaterials address materials continuing the circular journey, this *circular solutions* search criteria for materials will deliver results that are Cradle2Cradle certified, mono fibers and materials that have been screened for restricted circular chemicals (as identified by REACH). Additionally, the *circular solutions* search will also highlight facilities that are instituting circular design practices.

Partner Spotlight:
Circular Fashion Partnership

The Circular Fashion Partnership is a cross-sectorial project led by Global Fashion Agenda, with partners Reverse Resources, BGMEA and P4G, to support the development of the textile recycling industry in Bangladesh by capturing and directing post-production fashion waste back into the production of new fashion products. The partnership facilitates circular commercial collaborations between textile and garment manufacturers, recyclers and fashion brands operating in Bangladesh. The *circular solutions* search will highlight facilities participating on the Reverse resources SaaS Platform.





CARBON SOLUTIONS



The greatest factor contributing to the climate crisis is human activity, namely the burning of fossil fuels and the destruction of biodiversity. In addition to the *environmental stewardship* actions being taken by stakeholders along the value chain, we can and must do more. Recognizing

Textile Exchange's 2030 Strategy: Climate+, the Outdoor Industry Association's aspiration to be Climate Positive by 2030 and more, the *carbon solutions* sustainability search criteria includes materials and facilities that achieve carbon neutral or carbon positive status.



NEARSHORING

Nearshoring reflects the desire to source raw materials in proximity to production. It can create a lower carbon footprint for products, but also can create opportunities to reshore to complete supply chain requirements in country. Material Exchange supports *nearshoring* in several ways: matching country of origin from materials to production facility; or buyers can specify their nearshoring goals and our team will develop a map of sourcing options.



DEADSTOCK

Deadstock, also known as excess and liability materials, can be ideal for emerging brands, small runs and brands with a pledge to rescue waste. Quantities may be limited, but buyers that source deadstock can help divert them from landfill or incineration. Suppliers (and buyers) are encouraged to list their excess and liabilities as deadstock so those materials can be discovered through the *deadstock* sustainability search.



SUSTAINABLE IMPACT

BADGES		SASB	SDGs
	ENVIRONMENTAL STEWARDSHIP	CG-AA-430A.1 CG-AA-430A.2	
	WATER STEWARDSHIP	CG-AA-250A.1 CG-AA-250A.2 CG-AA-430A.1 CG-AA-430A.2	
	FOREST STEWARDSHIP	CG-AA-440A.1 CG-AA-440A.2	
	SOCIAL COMPLIANCE	CG-AA-430B.1 CG-AA-430B.2 CG-AA-430B.3	
	BETTER LEATHER	CG-AA-250A.1 CG-AA-250A.2 CG-AA-430A.1 CG-AA-430A.2 CG-AA-440A.1 CG-AA-440A.2	
	RECYCLED CONTENT	CG-AA-440A.1 CG-AA-440A.2	
	SUSTAINABLE COTTON	CG-AA-250A.1 CG-AA-250A.2 CG-AA-440A.1 CG-AA-440A.2	
	REGENERATIVE AGRICULTURE	CG-AA-440A.1 CG-AA-440A.2	
	BIOMATERIALS	CG-AA-440A.1 CG-AA-440A.2	
	CIRCULAR SOLUTIONS	CG-AA-250A.1 CG-AA-250A.2	
	CARBON SOLUTIONS	CG-AA-430A.1 CG-AA-430A.2 CG-AA-440A.1 CG-AA-440A.2	
	DEADSTOCK	CG-AA-440A.1 CG-AA-440A.2	
	NEARSHORING		

OUR SUSTAINABLE SEARCH ECOSYSTEM

<p>ABRAPA</p>	<p>The Brazilian Responsible Cotton program – ABRAPA, is the union of cotton growers in favor of a more sustainable cotton production in Brazil, focused on the progressive evolution of good agricultural, social, environmental and economic practices.</p>
<p>ALLIANCE FOR WATER STEWARDSHIP</p>	<p>AWS is a global membership collaboration comprising businesses, NGOs and the public sector. Members contribute to the sustainability of local water resources through their adoption and promotion of a universal framework for the sustainable use of water.</p>
<p>B CORP</p>	<p>A certified B Corp is a company that balances profit and purpose.</p>
<p>BASF E3</p>	<p>e3® Sustainable Cotton directly connects all members of the cotton fiber value chain, from cotton farmers to brands and retailers.</p>
<p>BCI (BETTER COTTON INITIATIVE)</p>	<p>Better Cotton Initiative (BCI) is a global not-for-profit organization and the largest cotton sustainability program in the world.</p>
<p>BHIVE BY GO BLUE</p>	<p>BHive® is the leading chemical management platform in the textile and fashion industry, developed by sustainability consultancy GoBlu International Ltd.</p>
<p>BIOBASED CONTENT SCHEME</p>	<p>Biobased Content Scheme enables transparent and credible communication about the biobased content of a product in the business-to-business and business-to-consumer communication, which not only involves the biobased carbon content, but also the other elements hydrogen, oxygen and nitrogen.</p>
<p>BLUESIGN®</p>	<p>BLUESIGN is a system that provides safer and more sustainable environments for people to live and work in. Powered by a holistic approach, BLUESIGN traces each textile's path along the manufacturing process, making improvements at every stage from factory floor to finished product.</p>

OUR SUSTAINABLE SEARCH ECOSYSTEM

BSCI	BSCI provides a system that helps companies to gradually improve working conditions in their supply chain. Producers that meet all BSCI requirements are encouraged to go further and achieve the best practice, the SA8000 social management certification developed by Social Accountability International (SAI).
CHROMEFREE® LEATHER ALLIANCE	The ChromeFree® Leather Alliance educates and brings awareness to innovative leather tanning solutions and connect global brands with their network of ChromeFree® leather suppliers.
CLEANER COTTON™	The Sustainable Cotton Project works with California cotton growers to reduce the harmful impacts of pesticide use from cotton production on the air, water and soil in the region and to market the cotton they grow in the project as Cleaner Cotton™.
CLIMATE BENEFICIAL™ FIBER	Fibershed’s Climate Beneficial™ Verification program and label supports farmers and ranchers in landscape level stewardship that focuses on working to build healthy soil.
CNAS	The CNAS (China National Accreditation Service for Conformity Assessment, Chinese: 中国国家认可委员会) is the national accreditation body in China that is responsible for the accreditation of certification organizations, laboratories and inspection bodies.
COTTON MADE IN AFRICA	Cotton made in Africa (CmiA) is an internationally recognised standard for sustainable cotton from Africa. Since 2005, CmiA has been committed to protecting the environment while improving working and living conditions for smallholder farmers and gin workers.
CRADLE TO CRA- DLE (C2C) CERTI- FIED®	Cradle to Cradle Certified® is a globally recognized measure of safer, more sustainable products made for the circular economy.

OUR SUSTAINABLE SEARCH ECOSYSTEM

<p>ECO PASSPORT BY OEKO-TEX®</p>	<p>ECO PASSPORT by OEKO-TEX® is an independent certification system for chemicals, colorants and auxiliaries used in the textile and leather industry. During a multistep process, they analyze whether each individual ingredient in the chemical product meets the statutory requirements and is not harmful to human health. Both brands and manufacturers value the ECO PASSPORT as credible proof of sustainable textile and leather production.</p>
<p>ECOLAB®</p>	<p>Ecolab® is the global leader in water, hygiene and infection prevention solutions and services that protect people and vital resources.</p>
<p>EIM (ENVIRONMENTAL IMPACT MEASUREMENT)</p>	<p>EIM (Environmental Impact Measurement) software developed by Jeanologia is the only software on the market that measures the environmental impact within the garment finishing industry. This user-friendly tool helps brands achieve their goals on their roadmap to sustainability.</p>
<p>EUROPEAN FLAX STANDARD</p>	<p>EUROPEAN FLAX® is the qualitative visa of premium European linen fiber. It preserves, highlights and safeguards a uniquely European agriculture and industry, its regional origins and its inherent non-relocatable know-how.</p>
<p>FAIR TRADE CERTIFIED™</p>	<p>The Fair Trade Certified™ seal represents thousands of products, improving millions of lives and protecting land and waterways in 45 countries and counting.</p>
<p>FASHION POSITIVE+</p>	<p>Fashion Positive leads the vision, definition and use of safe and circular materials for the fashion industry.</p>
<p>FSC</p>	<p>The Forest Stewardship Council (FSC) is an independent, non-governmental, not for profit organization established to promote the responsible management of the world's forests.</p>

OUR SUSTAINABLE SEARCH ECOSYSTEM

<p>GLOBAL ORGANIC TEXTILE STANDARD (GOTS)</p>	<p>The Global Organic Textile Standard (GOTS) was developed by leading standard setters to define globally recognized requirements for organic textiles. From the harvesting of raw materials to environmentally and socially responsible manufacturing to labelling, textiles certified as GOTS provide a credible assurance to the consumer.</p>
<p>GLOBAL RECYCLED STANDARD (GRS)</p>	<p>The GRS is an international, voluntary, full-product standard that outlines requirements for the third-party certification of recycled content, chain of custody, social and environmental practices and chemical restrictions. The goal of the GRS is to increase the use of recycled materials in products and to reduce/eliminate the harm caused by its production.</p>
<p>GREENSCREEN® FOR SAFER CHEMICALS</p>	<p>GreenScreen For Safer Chemicals® is an open, transparent, and publicly accessible method for chemical hazard assessment to help move our society quickly and effectively toward the use of greener and inherently safer chemicals.</p>
<p>HERPROJECT</p>	<p>BSR's HERproject™ is a collaborative initiative that strives to empower low-income women working in global supply chains.</p>
<p>IFOAM – ORGANICS INTERNATIONAL</p>	<p>Founded in 1972, IFOAM - Organics International is a member-based organization working to bring true sustainability to agriculture across the globe.</p>
<p>INSTITUTE OF PUBLIC & ENVIRONMENTAL AFFAIRS (IPE)</p>	<p>The Institute of Public & Environmental Affairs (IPE) is a non-profit environmental research organization registered and based in Beijing, China that works with brands and their suppliers to respond to pollution issues and promote information disclosure.</p>
<p>ICROA</p>	<p>The International Carbon Reduction and Offset Alliance (ICROA) is a non-profit organization made up of the leading carbon reduction and offset providers in the voluntary carbon market.</p>

OUR SUSTAINABLE SEARCH ECOSYSTEM

ISCC	International Sustainability and Carbon Certification (ISCC) is a globally applicable sustainability certification system and covers all sustainable feedstocks, including agricultural and forestry biomass, circular materials and renewables.
ISO 14001	ISO 14001:2015 specifies the requirements for an environmental management system that an organization can use to enhance its environmental performance.
ISO 26000	ISO 26000:2010 Guidance on social responsibility is an international standard providing guidelines for social responsibility (SR, often CSR - corporate social responsibility).
ISO 45001	ISO 45001:2018 specifies requirements for an occupational health and safety (OH&S) management system, and gives guidance for its use, to enable organizations to provide safe and healthy workplaces by preventing work-related injury and ill health, as well as by proactively improving its OH&S performance.
ISO 9001	The ISO 9000 family is the world's best-known quality management standard for companies and organizations of any size.
LAND TO MARKET™	LAND TO MARKET™ is the world's first regenerative verification and sourcing solution.
LEATHER NATURALLY	Leather Naturally promotes the use of globally-manufactured sustainable leather and seeks to inspire and inform designers, creators, and consumers about its beauty, quality and versatility.
LOW CARBON MANUFACTURING PROGRAMME (LCMP)	WWF-Hong Kong's Low Carbon Manufacturing Programme (LCMP) aims to reduce carbon emissions generated by manufacturing facilities. The LCMP also encourages companies to increase the transparency of supply chain carbon emissions and uncover inefficiencies in overall resource use.

OUR SUSTAINABLE SEARCH ECOSYSTEM

LEATHER WORKING GROUP (LWG)	<p>Leather Working Group (LWG) is a not-for-profit organization responsible for the world’s leading environmental certification for the leather manufacturing industry. As a multi-stakeholder group, LWG has over 1000 members from across the leather supply chain.</p>
LEATHER STANDARD BY OEKO-TEX®	<p>LEATHER STANDARD by OEKO-TEX® is an internationally standardized testing and certification system for leather and leather goods at all production levels, including accessory materials.</p>
LEED	<p>LEED (Leadership in Energy & Environmental Design) certification provides independent verification of a building’s green features, allowing for the design, construction, operations and maintenance of resource-efficient, high-performing, healthy, cost-effective buildings.</p>
MADE IN GREEN BY OEKO-TEX®	<p>MADE IN GREEN by OEKO-TEX® is a traceable product label for all kinds of textiles (e.g. garments, home textiles) and leather products (e.g. garments, finished and semi-finished leathers) including non-textile/-leather components (e.g. accessories).</p>
ORGANIC CONTENT STANDARD (OCS)	<p>Organic Content Standard (OCS) is a textile certification that guarantees the biological (organic) origin of a textile fiber. This certification model is only applicable to natural fabrics (of vegetable or animal origin), and in particular to organic cotton.</p>
PARTNERSHIP FOR CLEANER TEXTILES (PaCT)	<p>IFC-led Advisory Partnership for Cleaner Textile (PaCT) is a holistic program that supports the entire textile value chain – spinning, weaving, wet processing and garment factories in adopting Cleaner Production (CP) practices and engages with brands, technology suppliers, industrial associations, financial institutions, and the government to bring about systemic and positive environmental change for the Bangladesh textile sector and contribute to the sector’s long-term competitiveness and environmental sustainability.</p>

OUR SUSTAINABLE SEARCH ECOSYSTEM

PROGRAMME FOR THE ENDORSE- MENT OF FOREST CERTIFICATION (PEFC)	<p>PEFC is a global alliance of national forest certification systems. As an international non-profit, non-governmental organization, they are dedicated to promoting sustainable forest management.</p>
RESPONSIBLE DOWN STANDARD (RDS)	<p>The Responsible Down Standard (RDS) aims to ensure that down and feathers come from animals that have not been subjected to any unnecessary harm.</p>
REACH	<p>Registration, Evaluation, Authorisation and Restriction of Chemicals is a European Union regulation dating from 18 December 2006. REACH addresses the production and use of chemical substances, and their potential impacts on both human health and the environment.</p>
RECYCLED CLAIM STANDARD BLENDED (RCS BLENDED)	<p>RCS blended - Recycled Claim Standard The RCS (Recycled Claim Standard) is used as a chain of custody standard to track recycled raw materials through the supply chain. The standard was developed through work done by the Materials Traceability Working Group, part of OIA's Sustainability Working Group.</p>
RECYCLED CLAIM STANDARD (RCS)	<p>The Recycled Claim Standard (RCS) is an international, voluntary standard that sets requirements for third-party certification of Recycled input and chain of custody.</p>
REGENAGRI®	<p>regenagri® is a regenerative agriculture program aimed at securing the health of the land and the wealth of those who live on it.</p>
RESPONSIBLE MOHAIR STANDARD (RMS)	<p>The Responsible Mohair Standard (RMS) is a voluntary standard that addresses the welfare of goats and the land they graze on.</p>

OUR SUSTAINABLE SEARCH ECOSYSTEM

REGENERATIVE ORGANIC CERTIFIED™ (ROC)	<p>Regenerative Organic Certified™ is a revolutionary new certification for food, textiles, and personal care ingredients. ROC™ farms and products meet the highest standards in the world for soil health, animal welfare, and farmworker fairness.</p>
RESET CARBON	<p>RESET Carbon is a leading Asia-focused energy and environmental solutions provider.</p>
ROUNDTABLE ON SUSTAINABLE (ROSB)	<p>The ROSB Standard is anchored in 12 sustainability principles and their underlying criteria that has been developed to ensure that the key environmental and social issues surrounding the use of fuels and products made from bio-based and advanced feedstocks are addressed.</p>
RESPONSIBLE WOOL STANDARD (RWS)	<p>The Responsible Wool Standard (RWS) is a voluntary global standard that addresses the welfare of sheep and the land they graze on.</p>
SA8000® STANDARD	<p>SA8000 certification is a management systems standard, modeled on ISO standards. The criteria require that facilities seeking to gain and maintain certification must go beyond simple compliance to the standard.</p>
SCIENCE BASED TARGET INITIATIVE (SBTi)	<p>The Science Based Target Initiative (SBTi) drives ambitious climate action in the private sector by enabling companies to set science-based emissions reduction targets.</p>
SDGS	<p>The Sustainable Development Goals or Global Goals are a collection of 17 interlinked global goals designed to be a “blueprint to achieve a better and more sustainable future for all.” See how the Material Exchange sustainability search tool maps to the SDGs on page 30.</p>

OUR SUSTAINABLE SEARCH ECOSYSTEM

SEDEX	Sedex is a membership organization that provides one of the world’s leading online platforms for companies to manage and improve working conditions in global supply chains.
SUSTAINABLE FIBER ALLIANCE CASHMERE (SFA)	Internationally traded SFA cashmere is produced using sustainable practices, resulting in a reduced environmental footprint and secured appropriate economic returns for participants throughout the supply chain.
SOCIAL LABOR CONVERGENCE PROGRAM	The Social & Labor Convergence Program offers the tools and system to measure working conditions in global supply chains.
STEP BY OEKO-TEX®	STeP by OEKO-TEX® stands for Sustainable Textile & Leather Production and is a modular certification system for production facilities in the textile and leather industry. The goal of STeP is to implement environmentally friendly production processes in the long term, to improve health and safety and to promote socially responsible working conditions at production sites.
SUSTAINABLE FOREST INITIATIVE (SFI)	SFI Inc. is an independent, nonprofit organization that stands for future forests.
SUSTAINABLE LEATHER FOUNDATION (SLF)	Sustainable Leather Foundation (SLF) is an industry-led, consumer-focused initiative that provides an audit and certification standard for organizations involved in the manufacture of leather to measure their Environmental, Social and Governance performance against a set of recognized standards and limits.
U.S. COTTON TRUST PROTOCOL CERTIFICATE®	The U.S. Cotton Trust Protocol® sets a new standard for more sustainably grown cotton. It brings quantifiable and verifiable goals and measurement to sustainable cotton production and drives continuous improvement in key sustainability metrics.

OUR SUSTAINABLE SEARCH ECOSYSTEM

U.S. TRACEABLE COTTON	Comprehensive tracking and identification systems throughout the cotton production supply chain in both Australia and the U.S.
UL 2809	UL 2809 Environmental Claim Validation Procedure (ECVP) for Recycled Content is used to evaluate and validate defined source material content claims.
USDA BIOPREFERRED CERTIFICATION	Managed by the U.S. Department of Agriculture (USDA), the goal of the BioPreferred Program is to increase the purchase and use of biobased products. The BioPreferred Program was created by the 2002 Farm Bill and reauthorized and expanded as part of the Agriculture Improvement Act of 2018 (2018 Farm Bill).
WRAP	WRAP is an independent, objective, non-profit team, of global social compliance experts dedicated to promoting safe, lawful, humane and ethical manufacturing round the world through certification and education.
ZDHC CLEARSTREAM	ZDHC ClearStream is an easy-to-read facility performance report of ZDHC wastewater conformance that is accepted by leading brands.
ZDHC GATEWAY	The ZDHC Gateway - Chemical Module is a web-based solution that supports the entire value chain. This advanced search engine enables registering and finding chemical formulations that comply with the ZDHC MRSL. It simplifies the search for more sustainable chemicals and best practices.
ZDHC INCHECK	ZDHC InCheck is an easy-to-read chemical inventory report. It aims to provide an overall score of ZDHC MRSL conformance for all products in the inventory and shows where improvements can be made.
ZQ MERINO FIBRES™	ZQ is a wool certification standard that stands for a better quality of life. For the animals, for the planet, and people.



Gold Material

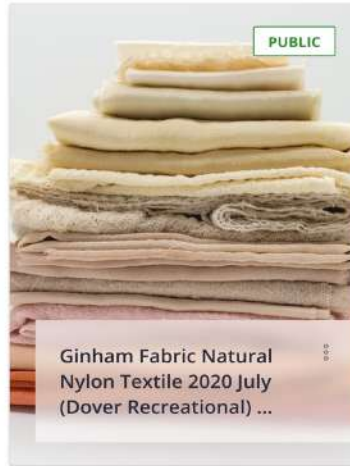
- Dashboard
- Request
- Offers
- Materials
- Collections**
- Visuals
- Documents
- Showrooms
- Users/Groups
- Digital Profile
- Certificates

Collections - COLLECTIONS

Search for ...



Filter



Total results: 50 collections



Join us in creating a more sustainable industry

sustainability@material-exchange.com
material-exchange.com

Material Exchange 2021 ©